

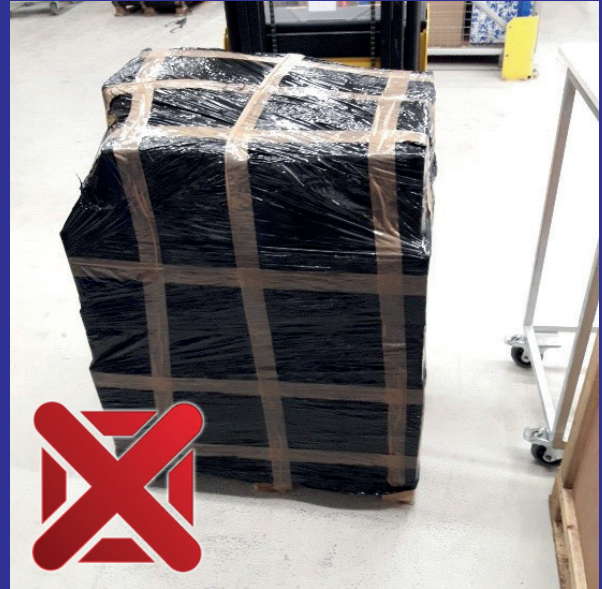
## CORRECT!

- Correctly stacked
- Edge protection



## WRONG!

- Irregularly stacked
- Without edge protection



## CORRECT!

- Sufficient stuffing material
- Protection by masterboxes



## WRONG!

- No stuffing material



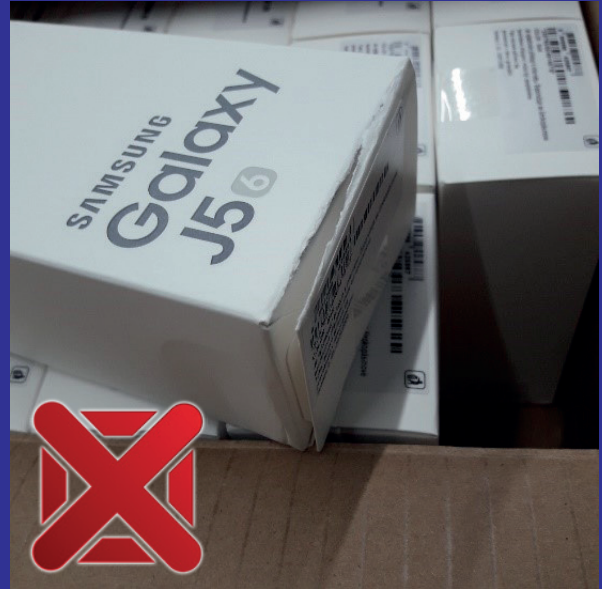
## CORRECT!

- Perfect packaging



## WRONG!

- Improperly opened packaging



## CORRECT!

- Only use stuffing material



## WRONG!

- Devices as stuffing material



## CORRECT!

- Only use proper packaging



## WRONG!

- Use of damaged packaging



## CORRECT!

- Assort devices
- Deliver in masterboxes



## WRONG!

- Not assorted devices



## CORRECT!

- Masterbox in overpack



## WRONG!

- Masterbox without overpack



## CORRECT!

- Proper seal



## WRONG!

- Broken seal



## CORRECT!

- Proper seal



## WRONG!

- Broken seal



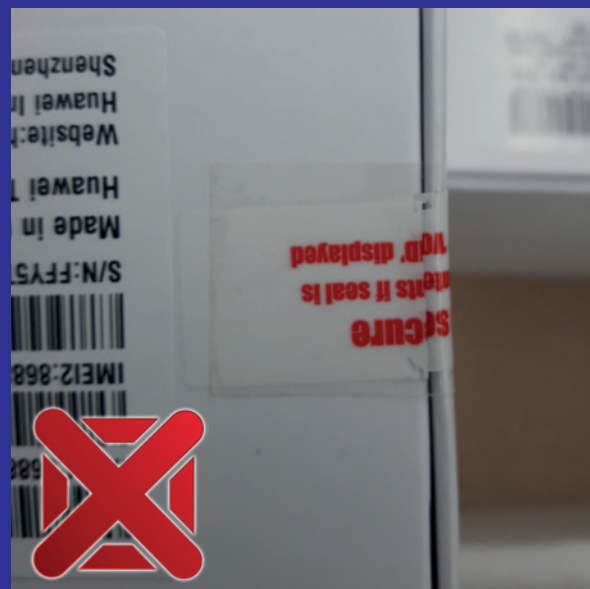
## CORRECT!

- Proper seal



## WRONG!

- Broken seal



## CORRECT!

- Original seal



## WRONG!

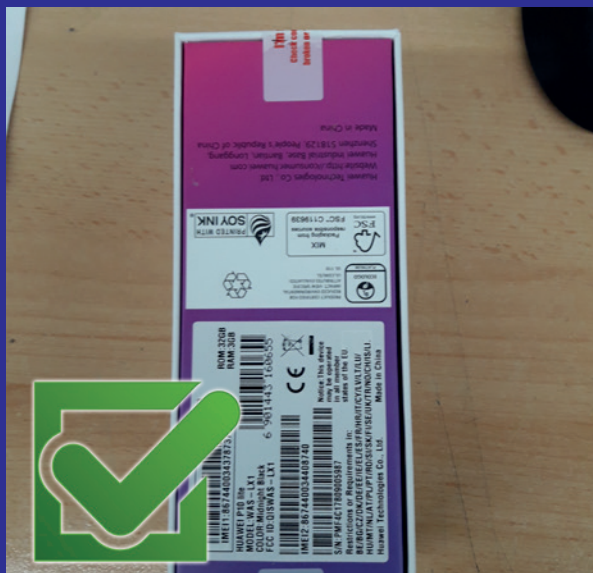
- Different/ wrong seal



# QUALITY REQUIREMENTS

## CORRECT!

- clean product



## WRONG!

- glue parts left over



## CORRECT!

- EU-Device



## WRONG!

- NON-EU-Device



## CORRECT!

- Sales boxes without labels



## WRONG!

- Labeled sales boxes



## CORRECT!

- Original EAN & serialnumber



## WRONG!

- overstickered EAN & serialnumber



## CORRECT!

- second seal is bigger or same size than original seal



## WRONG!

- second seal is smaller than original seal

